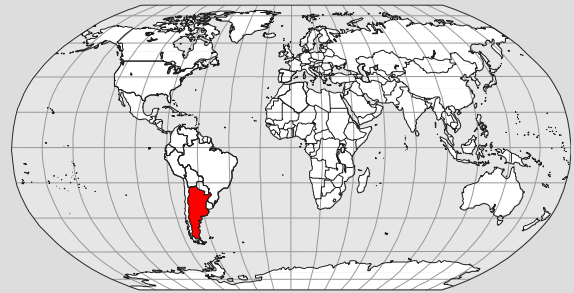


## SEISMIC SAFETY EVALUATION PROGRAMME – ATUCHA I NUCLEAR POWER PLANT Lima, Buenos Aires, Argentina – Nucleoeléctrica Argentina SA



*Courtesy of Nucleoeléctrica Argentina S.A.*

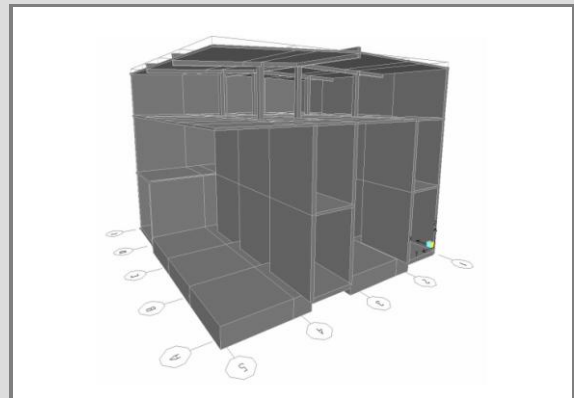


### Main Facts

- Atucha I is a 357 MWe Nuclear Power Plant unit, including a Pressurized Heavy Water Reactor of the pressure-vessel type.
- It is located at the Atucha site, 100 Km north of Buenos Aires City.
- It was designed and built by Siemens (Germany). Commercial operation since 1974.
- It was the first Nuclear Power Plant built in Latin America.
- Main contractor of Seismic Safety Evaluation Programme: James J. Johnson and Associates (USA).

### Scope

- Technical support for field walk downs and preparation of documentation.
- Finite-element models of buildings and structures.
- Seismic capacity verification of buildings and structures.



### Highlights

- Phase 1: Scoping Study & Preliminary Plant Walk down.
- Phase 2: Development of the Safe Shutdown Equipment List (SSEL) and System Walk down.
- Phase 3: Seismic Response and Structure Capacity Evaluation.
- Phase 4: Seismic Capability Walk down – Screening Process.



SEISMIC SAFETY EVALUATION PROGRAMME - ATUCHA I NUCLEAR POWER PLANT - LIMA, BUENOS AIRES, ARGENTINA - NUCLEOELÉCTRICA ARGENTINA SA

 **ARGENTINA**

Encarnación Ezcurra 365  
C1107CLA Buenos Aires  
Ph.: +54 (11) 4347 0300

 **BOLIVIA**

Torres CAINCO  
Av. Las Américas 7 - Piso 10  
Santa Cruz de la Sierra  
Ph.: +591 (3) 336 2263

 **BRAZIL**

Rio Office Park - Av. Victor Civita 77  
Bloco 1, Edif. 6.2, 6° andar  
22775-044 Barra da Tijuca  
Rio de Janeiro (RJ)  
Tel.: +55 (21) 3535-9855  
Fax: +55 (21) 3535-9887

 **COLOMBIA**

Calle 99 No. 9A - 45 Oficina 303 A  
Barrio Chicó, Bogotá DC  
Ph.: +57 (1) 745 8069  
Fax: +57 (1) 745 8077

 **ECUADOR**

Av. República de El Salvador 780  
Edificio Twin Towers - Piso 6 - Quito  
Ph.: +593 (2) 292 3943

 **MEXICO**

Paseo de la Reforma 373 - Piso 14  
Col. Cuauhtemoc, México D.F  
Ph.: +52 (555) 207 2625

 **PERU**

Av. Canaval y Moreyra N° 452,  
Oficina 1401, San Isidro, Lima 27  
Ph: +(511) 705 3070

 **SAUDI ARABIA**

P.O.Box 3865  
Al Falak Towers, 5th.Floor  
King Abdulaziz Road  
Al Khobar 31952- KSA  
Ph.: +966 (3) 887 5339

 **SPAIN**

Av. del General Perón 38,  
Edificio MASTER's 1 - Planta 13  
28020, Madrid  
Ph.: +34 (91) 556 6359 / 6751