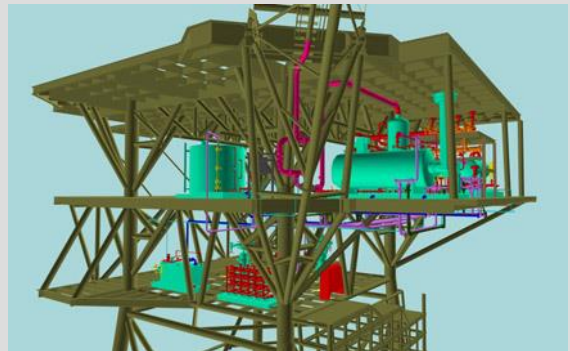
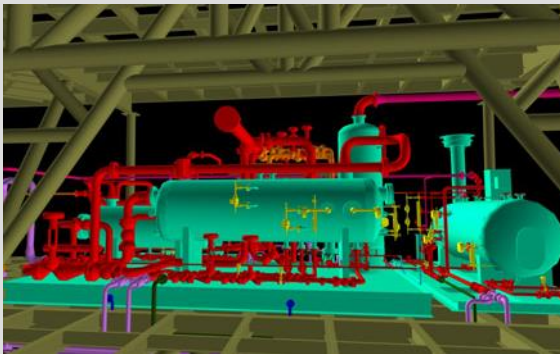
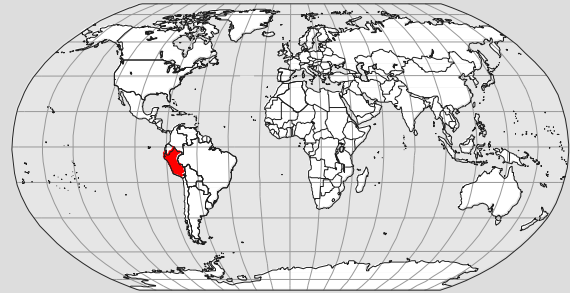


GAS & WATER REINJECTION – ALBACORA OFFSHORE PLATFORM Offshore Lot Z1-8-A, Tumbes, Peru – BPZ



Main Facts

- Crude Production: 10,000 bpd
- Gas Reinjection: 8 MMSCFD
- Water Reinjection: 1500 bpd

Scope

- Project management
 - Basic and detail engineering
 - Procurement management
 - Construction management

Schedule

February 2011 – In progress

Facilities

- Triphase separators
- Gas compressor
- Water reinjection pump
- Oil export pumps
- Auxiliary systems

Highlights

- Offshore engineering and design
- High integration with the Client
- Strategic project for Peru's North development
- Client with a strong growth strategy



GAS & WATER REINJECTION – ALBACORA OFFSHORE PLATFORM - OFFSHORE LOT Z1-8-A, TUMBES, PERU – BPZ

 **ARGENTINA**

Encarnación Ezcurra 365
C1107CLA Buenos Aires
Ph.: +54 (11) 4347 0300

 **BOLIVIA**

Torres CAINCO
Av. Las Américas 7 - Piso 10
Santa Cruz de la Sierra
Ph.: +591 (3) 336 2263

 **BRAZIL**

Rio Office Park - Av. Victor Civita 77
Bloco 1, Edif. 6.2, 6° andar
22775-044 Barra da Tijuca
Rio de Janeiro (RJ)
Ph.: +55 (21) 3535-9855
Fax: +55 (21) 3535-9887

 **COLOMBIA**

Calle 99 No. 9A - 45 Oficina 303 A
Barrio Chicó, Bogotá DC
Ph.: +57 (1) 745 8069
Fax: +57 (1) 745 8077

 **ECUADOR**

Av. República de El Salvador 780
Edificio Twin Towers - Piso 6 - Quito
Ph.: +593 (2) 292 3943

 **MEXICO**

Paseo de la Reforma 373 - Piso 14
Col. Cuauhtemoc, México D.F
Ph.: +52 (555) 207 2625

 **PERU**

Av. Canaval y Moreyra N° 452,
Oficina 1401, San Isidro, Lima 27
Ph.: +(511) 705 3070

 **SAUDI ARABIA**

P.O.Box 3865
Al Falak Towers, 5th.Floor
King Abdulaziz Road
Al Khobar 31952- KSA
Ph.: +966 (3) 887 5339

 **SPAIN**

Av. del General Perón 38,
Edificio MASTER's 1 - Planta 13
28020, Madrid
Ph.: +34 (91) 556 6359 / 6751

 **USA**

2500 City West Boulevard,
Suite 300
Houston, Texas
Ph.: +1 (713) 405 1836

 **VENEZUELA**

Quinta Zamira, Sede EPSA,
Urbanización Chuao, Municipio Baruta,
Caracas, Venezuela
Ph.: +58 (212) 993 2215 / 3588